

Student Handbook 2011 - 2012



*The Home of
Bulldog Pride!*

This Handbook Belongs To:

name: _____

address: _____

phone: _____ email: _____

BELLEROSE COMPOSITE HIGH SCHOOL

49 Giroux Road

St. Albert, Alberta T8N 6N4

phone: 780.460.8490

fax: 780.459.0798

email: bellerose@spschools.org

website: <http://bchs.spschools.org>

Table of Contents

Principal’s Message	1
Philosophy	2
Bellerose Traditions	2
Bellerose School Staff	4
Student Activities	5
Student Council	5
Athletics	6
Student Services	7
Library & Textbooks	9
Communications & General Information	10
Attendance	11
Student Absence During the School Year	11
Student Conduct	12
Cellular Phones, Wireless Devices & Cameras	14
FOIP	14
School Resource Officer	14
Computer Usage	15
Graduation Eligibility & Information	16
Academic Misconduct	17
Credit Load & Timetables	17
Prerequisite Marks for Registration	18
Course Changes & Withdrawals	18
Appeals	19
Assessment & Reporting	19
Course Challenge	20
Flex Schedule	21
Bell Schedules	22
Semester 1 & 2 Timetables	23
School Map	24
What & Where	26
School Calendar	27

Principal's Message

It gives me great pleasure to welcome you to Bellerose Composite High School, home of the Bulldogs! At Bellerose, we are proud of our school and the accomplishments of our students.

We offer a wide range of programs:

- Academics
- Fine Arts Programs
- Career & Technology Studies (CTS)
- International Baccalaureate Program (IB)
- Athletics Programs
- Sports Academy
- Leadership Program
- Registered Apprenticeship Program (RAP)
- Work Experience
- Special Education
 - Gaining Occupational & Life Skills (GOALS)
 - Knowledge & Employability Program (K & E)
- Transitional Recommended Year TRY 10
- Continuing Education (Summer School)

Bellerose students are encouraged to register in a program of studies that will develop the knowledge and skills necessary for success in the future. They are encouraged to pursue individual interests by participating in extra-curricular activities and by choosing optional interest courses as a part of a program of studies.

Bellerose Composite High School provides opportunities for students to prepare for future endeavours and to develop life-long learning. We can offer you a well-rounded education.

The Department of Education's High School Flexibility Enhancement Pilot Project, among other initiatives, allows us to create the now famous "Flex Block." This is a 70 minute block of time, mid-day, for students to self-direct their learning. Most common uses are tutorial/homework catch up, enrichment activities, and extra-curricular opportunities.

The Bellerose staff looks forward to working with you and hope to help make your high school years successful, memory filled, and rewarding.

Bellerose students take **PRIDE** in their school and their learning.



George Mentz, Principal



Philosophy

Bellerose Composite High School provides opportunities for students to prepare for future endeavours and life-long learning. We strive for excellence. Our environment is caring, cooperative, innovative, and sensitive to the needs and interests of students, staff, and parents.

Bellerose Composite High School offers both school and community-based educational opportunities in order to keep pace with an ever-changing world. We encourage our students to be individuals who:

- Achieve a high personal standard.
- Have pride in their school
- Have a high level of self-esteem and are capable of influencing their own destinies
- Have effective communication skills
- Are creative critical thinkers and problem-solvers
- Are responsible citizens, with tolerance and respect for others

Bellerose Traditions

At Bellerose, we are committed to recognizing and celebrating student participation, leadership, and achievement in citizenship, the arts, athletics, and academics.

Bellerose Colours

Burgundy, Grey & Black

School Mascot

Rosie the Bulldog

Co-Curricular Theme

Bulldog Pride

Bulldog Pride

P = Politeness

R = Respect for Yourself, Others & Property

I = Integrity

D = Dignity

E = Excellence

Achievement Ceremony

The Bellerose Achievement Awards Night is held each fall to honour students for individual academic and program excellence during the 12 previous school year. Students are recognized for academic honours, highest academic achievement at each grade level, achievement in Fine Arts, Career and Technology Studies, and for excellence in specific programs. Students are also recognized and honoured for leadership, community service, and humanitarianism. A variety of scholarships are presented including the Alexander Rutherford Scholarships, University Entrance Scholarships and Leadership Scholarships, along with International Baccalaureate Diplomas and Certificates and the Governor General's Medal.

Bellerose Family Awards

Two graduating students, one male and one female, are selected by BCHS staff to receive this award, which is presented annually by the Bellerose Family. It is awarded to students who best exemplify the ideals and spirit of BCHS. The Bellerose Family Awards are presented annually at the Graduation Ceremony.

Athletics Pride Awards

This ceremony is held in June each year to recognize students for their participation, achievement, and leadership on school teams, and for service to the school and the community at large during the current school year.

Renaissance Program

The mission of the Renaissance Program at Bellerose is to acknowledge the educational achievements and outstanding contributions of students and staff members through a process of:

Respect, Recognition, Reinforcement & Reward

The goals of the Renaissance Program are:

- Improving academic performance
- Increasing attendance levels & punctuality
- Creating a positive, safe & inviting school environment

Stars of Bellerose

Stars of Bellerose awards are presented annually to one female and one male student from each grade who contributed in a meaningful way to the Bellerose Community through their decency, diligence, and sense of community through everyday actions and behaviour. The Stars of Bellerose program also recognizes five students and staff each week who are nominated by their peers for their work ethic, for their perseverance, and for the respect shown to each other and the school.

Welcome Week

Organized and hosted by Student Council and held at the start of the school year. Welcoming activities include lunch-hour activities and high school survival kits.

Activity Weeks

Flex block activities all students held once per term. Students at all grade levels create teams to participate in activities for "BULLDOG PRIDE."

Musical Production

Held annually at the beginning of Semester 2, the Musical Production allows students at all grade levels to demonstrate their musical and dramatic abilities. It's so much fun it has to be experienced to be believed.

Graduation

The Commencement Exercises are held annually in June for students who meet the qualifications of an Alberta High School Diploma. There is also a banquet and dance for Grade 12 students at this time. Additional information about graduation can be found on page 16.

48-Hour Bikeathon for Cancer Research

For eight years, the staff, students, families, and friends of Bellerose have joined together in helping to make cancer history! Held in March, this school-wide event celebrates the community spirit of our students, who support a number of national charitable foundations for cancer research. **To date, the Bellerose Bikeathon has raised over \$350,000 for cancer research.**

Bulldoggedness!

Bellerose School Staff 2011-2012

Administration

Principal	George Mentz
Assistant Principal & Special Education	Max Chorney
Assistant Principal & IB Program	Jyoti Mangat
Department Heads	
Career & Technology Studies (CTS).....	Brian Noble
English & Second Languages	LuEllen Anderson
Mathematics.....	Bill Willette
Physical Education & Athletics.....	Sue Leighton
Sciences.....	Don Bliss
Social Studies & Fine Arts.....	Yvonne Jones
School Resource Officer	Cst. M.J. Burroughs
Student Services Counsellors	Krysta Wosnack & Randy Pool
Summer School	Krysta Wosnack
Work Experience & RAP	Bill Turnham

Teachers

Carly Agnew	Brian Grant	Sue Leighton	Gwenneth Shey
LuEllen Anderson	Brian Gurnham	Karen May-Healey	Ben Siemers
Gerry Banford	Dale Hawken	Gordon Murray	Judy Smallwood
Jeff Beaton	Chad Hill	Shawn Murray	Angela Thompson
Don Bliss	Mike Hutchings	Priscilla Nemeth	Maria Thompson
Jenny Bossio-Arlia	Yvonne Jones	Brian Noble	Mike Thompson
Carmen Bucyk	Jeanette Kary	Susan Rankin	Alan Thorne
Scott Coffin	Meredith Kazuro	Dave Rush	Bill Turnham
Jason Dabbagh	Steve Klein	Mark Samuel	Linda Vandael
Karen Dobko	Stephen Kohle	Ann Scott	Bill Willette
Dave Edwards	Kompf, Cassandra	Taylor Sedgewick	Dennis Wright
Lina Filice	Karen Labahn	Jason Segger	Ken Yaremkevich
			Todd Yick

Support Staff

Office Staff

Kathy Allen - Office Manager & Accounts Payable
Melissa Brook – Reception & Switchboard
Debra Fiddler – Communications
Lynn Kuch – Administration
Debbie Pietrzykowski – Accounts Receivable & IB
Jeannette Poirier – Attendance & HomeLogic
Carol Spychka – Student Services

Teaching Aides

Jackie Achen	Lee-Ann Kalen
Sharon Duperron	Carlo Marrasso
Debbie Edstrom	Danny Rose
Heather Gardner	Gerda Shank
Cindy Hubbard	

Library	Linda Schwam & Sandi Tough
Technical Analysts	Holly Fenton-Klima & Bret Prins
Cafeteria	Mirta Gigena, Lada Kruger, Sofia Wujkowski, Clare Young

Student Activities

We want you to be glad that you are a member of the Bellerose Family! We believe the spirit and pride of Bellerose is a reflection of the involvement of our students. The many activities that take place outside the classroom are an integral part of a student's education, and the mission of BCHS is to offer every student the opportunity to develop to his or her full capacity, to live life healthfully, to learn continually, and to contribute positively in a changing and diverse society. We offer a range of programs, clubs, teams, and activities for you. These programs provide opportunities for students to experience success. We appreciate your support and hope to see you at our events.

*We are a "Community of Achievers" through Success with Significance,
Service to Family, Service to School, and Service to Community."*

Bulldog Co-Curricular Activities

The Student Activities department offers many opportunities to be involved and active on campus and in the community. For direction about specific activities and clubs, see the Student Council Staff Advisors. There are a variety of clubs and activities at Bellerose. To be a member of a school club or team you must have paid your Student Council fees. All clubs welcome new members. Watch for when and where the club of your choice is meeting – then simply show up and join! Interested in something that is not listed? Start a new club! Get your club form in the Student Council Office (Room 161).

Activities, Clubs & Events

- 48-Hour Bikeathon
 - Activity Weeks
 - Anime Club
 - Blood Donor Clinic
 - B-Town Chow Down
 - Cappies
 - Cooking Club
 - Cupcake Festival
 - Dodgeball Tournament
 - Duke of Edinburgh Program
 - Eco Action
 - Fitness Centre
 - Grad Council
 - Gay Straight Alliance (GSA)
 - Global Action
 - Intramurals
 - Operation Christmas Child
 - Pennies for Peace
 - Pi Day
 - Photography Club
 - Recycling Club
 - Renaissance Program
 - Run for the Cure
 - Ski & Snowboard Club
 - Student Council
 - Terry Fox Run
 - Tournament of Champions
 - Yearbook Club
- ...and more!

Student Council

The Student Council at Bellerose serves to represent and support the academic and non-academic needs of the entire student body. The Council acts as a liaison among students, staff, and administration. Throughout the year, Student Council organizes various activities, sponsors numerous fundraisers, and provides support to clubs. Student Council is comprised of a number of positions as student leaders and/or representatives for areas such as grad, communications, and public relations. Student Council elections are generally held late May/early June for Grade 11 & 12 representatives, and in September/October for Grade 10 representatives.

Student Council meets weekly at lunch time. Meetings are open to all students. Please come and share your ideas and suggestions!

Student Council Fees

- Motivational Speakers & Student Assemblies
- Spirit Rallies
- Special Events & Theme Days
- Student Identification Cards
- Student Telephones
- Wall of Fame
- Intramurals
- Bulldog School Teams
- Bulldog Clubs

Lead, Motivate, Challenge, Be Involved

Bellerose Athletics Program

Bellerose Composite High School has an excellent, state-of-the-art facility. Our two gymnasiums accommodate a variety of team and individual athletic programs. We are proud of our newly renovated, state-of-the-art Fitness and Weight Training Centre, which features free weights, cross-training facilities, stationary bikes, and resistance-training stations. Bellerose offers a variety of student-centered opportunities for fitness, health, and wellness.

Under the direction of the dedicated teaching and coaching staff, BCHS has established a proud name with our Bulldog Athletics Program. In addition, there is a lively intramural program for students of all abilities.

BCHS STUDENT ATHLETIC SUCCESS is a result of:

- An excellent coaching staff who provide a positive road to achieving success
- The Student Council who support a “BULLDOG SPIRITED STUDENT BODY”
- The exceptional and dedicated athletes who attend Bellerose Composite High School

Intramural Athletics

In addition to our excellent interschool athletic program, Bellerose offers a varied and outstanding intramural program. All students are encouraged to participate.

Eligibility for Inter-School Athletics

Eligibility for inter-school athletics:

- Must be under 19 years of age on September 1
- Will have three years of eligibility from entry into Grade 10
- Must carry 10 credits (minimum) per semester

The following sports are offered at Bellerose Composite High School:

FALL SEASON

- Cross Country
- Football
- Golf
- Volleyball

WINTER SEASON

- Basketball
- Cheer Team
- Curling
- Wrestling

SPRING SEASON

- Badminton
- Rugby
- Soccer
- Track & Field

Insurance

Insurance coverage for students is primarily the responsibility of the parent or guardian. It is **highly recommended** that if your son/daughter is involved in Physical Education classes or is active in school athletics and activities, that you have/obtain personal injury insurance. Numerous companies can provide personal injury insurance. Applications for insurance through **INDUSTRIAL ALLIANCE PACIFIC INSURANCE** are available starting on registration day and at the front office.

Waivers

Bellerose students are involved in a wide variety of activities in and out of school activities that are both curricular and extra-curricular in nature. It is a District expectation that **WAIVER FORMS** be issued and signed for each activity. Students will be given waiver forms to have signed as necessary.

Home of the Bulldogs!

Student Services

Student Services provides services to students that will enable them to do their best during their time at Bellerose. Students may see a Counsellor by appointment or on a drop-in basis. The following services are provided to students:

Educational & Career Counselling

- Assistance with planning high school programs
- Assistance with study skills, learning strategies and exam preparation
- Provision of information on professional and peer tutoring
- Information on career trends
- Information on programs available at post-secondary institutions and their prerequisites for colleges, universities, and technical schools throughout Canada and the United States
- Information for students to spend a day in classes at the University of Alberta, NAIT, or Grant MacEwan, or to attend orientation sessions and open houses at various post-secondary institutions
- Information on the availability of scholarships and loans
- Administration of and interpretation of the Strong Interest Inventory for career planning (\$25.00 fee)
- Exploration of careers through computerized programs and the Internet
- Assistance with career path choices through personal consultation, class visits, post-secondary information days, and career days
- Assistance with job search skills

Personal Counselling

- Helping students deal with personal concerns or problems which may interfere with school performance and personal well-being
- Consulting with students and parents with regard to family problems
- Acting as a liaison with parents, students and community agencies
- Helping students with special needs to get the proper support and accommodations in place for success in an educational setting
- Monitoring the progress of identified students with special needs
- Monitoring the progress of identified “at risk” students

The Career Centre

The Career Centre is located in Student Services and is open throughout the day for students to explore different programs offered at various institutions throughout Canada. Information is also available about SATs and entrance into American colleges.

iLab: Independent Learning at Bellerose

Please see Student Services regarding alternatives for course completion. Enrollment in iLab requires special permission from Administration or Student Services.

*Watch for information regarding the annual
St. Albert Post-Secondary Information Evening,
which will be held at
Paul Kane High School on November 17.*

Alexander Rutherford Scholarships

Grade	75.0% to 79.9%	80.0% or Higher
10	\$300	\$400
11	\$500	\$800
12	\$700	\$1300

Rutherford Scholarships are awarded to recognize and reward achievement at the high school level and to encourage students to continue their studies. At all grade levels, including Grade 12, subjects include English, two additional core courses, and any other two courses including special interest subjects.

Application for any and/or all grades is made in one application, generally in Grade 12 for the May 1 deadline, although there is no time limit to apply for the scholarship, but students must be registered in a full-time post-secondary program for at least one semester in length or be an apprenticeship student. **Two sessions will be held in April for Grade 12 students, where Student Services will assist students in filling out the application form and will mail the application for students.** Application deadlines are May 1 for September entry and December 1 for January entry. Additional information: BCHS website and Registration Packages, at Student Services, and at <http://alis.gov.ab.ca/scholarships>.

In September 2010, Bellerose students were awarded \$259,300!

Alberta High School Diploma		
SUBJECT	CREDITS MINIMUM	REQUIRED COURSE MINIMUM
English Language Arts (ELA)		ELA 30-1 or 30-2
Social Studies		Social 30-1 or 30-2
Additional Grade 12 Credits	10	30 level courses &/or 3000 level courses other than ELA or Social from list above
Physical Education	3	Physical Education 10
Career & Life Management	3	CALM
Math		Math 20-1 or 20-2 or 20-3
Science		Science 20 or 24 or Biology 20 or Chemistry 20 or Physics 20
Other	10	CTS, Fine Arts, Second Language, Phys Ed 20 &/or 30
Other		Not Specified
MINIMUM OF 100 TOTAL CREDITS		

Note: A high school diploma does not necessarily grant admission to post-secondary institutions. Be aware that there are a variety of entrance requirements for post-secondary institutions and students should plan programs accordingly. Information regarding post-secondary requirements is available at Student Services.

Qualification for Graduation at Bellerose Composite High School is based on Alberta High School Diploma requirements.

Library

The School Library provides students with curriculum support and recreational reading materials. The library collection is automated and **students are required to use their school ID card** to sign out library materials. Laptop computers are available for checkout for use in the library only, and **ID cards MUST be presented at time of use.**

Hours of Operation

- 7:45 am to 3:30 pm daily
- Open at 9:30 am on staff meeting days (closed during staff meetings)
- Open regular hours during exams

Late/Overdue Materials

- Items are loaned for three-week periods.
- A list of students with overdue library materials is posted in the library and notices go out with report card and newsletter mailings.
- Students/parents will be charged as follows if items are lost or damaged: replacement cost of the book **plus** a \$5.00 processing fee
- School policy is to forward invoices for collections if there has been no response from parents/students after three mailed notifications of overdue library materials.

FOOD, DRINK & CELL PHONES
are NOT PERMITTED in the Library



Textbooks

All parents/students are required to pay the Learning Resource Fee at registration. This fee includes the cost of renting textbooks for a course term. **Student ID cards are required to sign out textbooks during each semester. Please inform the Library if you have NOT received an ID card;** we will ensure one is available for you!

ALL TEXTBOOKS ARE REQUIRED TO BE RETURNED IMMEDIATELY AT THE END OF EACH SEMESTER, UPON WITHDRAWAL, AND AT GRADUATION

All lost or damaged texts are assessed for replacement and students are charged a fee accordingly. If bar codes on texts are damaged, students will be charged a \$5.00 processing fee for bar code replacement.

LearnAlberta User ID

For the 2010-2011 school year, access to the LearnAlberta website: <http://learnalberta.ca/>
User ID: LA54 Password: 6378

Communications & General Information

HomeLogic

Parent involvement in a student's education is critical to their advancement. Bellerose can provide you with **real-time information about your student's progress in school, including: attendance, timetables, school fees, student marks, and transcripts.** HomeLogic is a website providing secure access to student information. For your user name and password, contact the school's Attendance Secretary. The information about your child placed on the site will only be made available to you and your child. HomeLogic parent and student accounts will remain active as long as the student is registered at Bellerose. Your email address will not be distributed.

Website

Includes monthly calendar and newsletters, and much, much more: <http://bchs.spschools.org>

Newsletters

The *Bellerose Bulletin* newsletter is mailed home regularly. These bulletins cover school information and highlight the next month's calendar. The mailings will also include formal report cards, student timetable updates, and other program information at appropriate times.

Switchboard Hours

Monday to Friday from 7:30 am to 3:00 pm at 780.460.8490. After hours attendance messages can be called in and left on the attendance voicemail. (See page 11 for additional attendance information.)

School Council

Interested parents are invited to join the School Council, which meets each month during the school year. Announcements of meeting times and topics are available in the *Bellerose Bulletin* each month.

Fee Payments

Any questions/concerns should be directed to Mrs. Pietrzykowski at ext. 123. Please note, a service fee of \$25.00 will be charged for all returned cheques.

Lockers

All Grade 10, 11 and 12 student lockers must be cleaned out and emptied by no later than Friday, June 15, 2012. Failure to meet the locker clean-out deadline will result in student locks being cut off and all contents from the locker being donated to charity. **A \$10.00 fee will be charged to the student invoice for failure to empty and clean the assigned locker.** Grade 10 and 11 students will continue to use their current locker for the next school year and must therefore lock their student lock on their locker tab once it is cleaned and emptied. **Grade 12s and students not returning for the next school year must hand in their lock with the combination to the Front Office by no later than Friday, June 15, 2012.**

School Nurse

Alberta Health Services works together with parents, schools and community agencies to provide a range of coordinated community health services for school-age children and their families. Our common goal is to improve students' health and learning outcomes. Various health services are provided by registered nurses, dental hygienists, rehabilitation, speech, and language practitioners. If you would like to talk to your school's nurse, please call the St. Albert Public Health Centre at 780.459.6671.

Attendance

Regular and punctual attendance, along with preparation for class, is expected of all students and has a direct relationship to success. This level of expectation is primarily the responsibility of students and parents. The school will support the efforts of parents and students in establishing positive behaviours.

- School directed field trips and curriculum related activities, preapproved by the Administration, will be identified as school related absences on a student's attendance file.
- Requests to sanction absences due to provincial or national competitions, religious ceremonies, and medical situations should be directed to an Administrator and will be reviewed on an individual basis of need.

An automated phone system contacts the home between 6:00 pm and 9:00 pm daily when a student has missed a class. If you are not aware of the absence, you are encouraged to speak to your son/daughter and contact the school (with your student's 5-digit ID number) if you would like follow-up action. **Parents/guardians are requested to notify the school (780.460.8490) to report all absences. Homework requests must be made by 9:30 am for pick up at the end of the school day.** A 24-hour message centre is available for this purpose.

Teachers generally make contact with parents if students have missed three or more classes without reasonable explanation. If necessary, a teacher may refer attendance concerns to a Counsellor or an Administrator. Absences are recorded on Progress and Mid-Term Reports. **Parents are encouraged to sign up for HomeLogic by contacting the Attendance Secretary** (see page 10).

Note: Under the Freedom of Information and Privacy Act, the school requires a written request or student ID number verification from parents to release student information. Student ID numbers are given to students upon registration and are also found on student timetables and reports.

Sign In / Sign-Out

Students who arrive late or need to leave school at some point in the school day are requested to sign in/out at the school office. This information may be critical in case of an emergency and may also be an important reference when verifying attendance. **These absences, however, are not automatically excused. Parent consent by way of a phone call or e-mail must additionally be received.**

Student Absence During the School Year

Parents/guardians sometimes choose to take students out of school for extended periods such as vacations, visits to relatives, assistance to the family, and so on. In such situations, **the school does not grant permission for the absence**. Parents/guardians must accept full responsibility for the detrimental effects of the absence. Regular class attendance is important to achievement. If an absence is planned during the school year, the student or parent should let both the school Administration and the various subject teachers know well before the absence. Within reason, the teacher will advise the student of what work will be covered during the absence. Teachers may give guidance and assignments that will reduce the negative effects of the absence. Students are responsible for making up the work missed within a reasonable amount of time. **Please note that in virtually all situations, significant absences will have a detrimental effect on achievement.**

Code of Student Conduct & Behaviour

Student Conduct Brochures are included with registration information in the July mailing. Students read, and acknowledge having read, Locker Licenses and Froshing Contracts during registration at the beginning of the school year.

Students at Bellerose Composite High School are expected to conduct themselves in a manner that is in keeping with the qualities of good citizenship. The behavioural expectations are consistent with the responsibilities stated in the **School Act, Section 12:**

“A student shall conduct himself so as to reasonably comply with the following code of conduct:

- (a) be diligent in pursuing his studies*
- (b) attend school regularly and punctually*
- (c) cooperate fully with everyone authorized by the board to provide educational programs and other services*
- (d) comply with the rules of the school*
- (e) account to his teachers for his conduct; and*
- (f) respect the rights of others.*

Consequences for failure to meet the requirements of the code of student behaviour and conduct may result in disciplinary action that may include suspensions and recommendations for expulsion from the school and/or district.”

Safe & Caring Schools Initiatives

The St. Albert Protestant School District maintains a district wide Safe and Caring Schools Initiative in an attempt to make schools safe places for all involved. Within this district partnership Bellerose Composite High School adheres to the commitment of **zero tolerance for violence. Consequences for verbal and physical violence will result in suspension.**

Froshing (Abduction & Assault)

In cooperation with and in conjunction with students of St. Albert Schools, parents, the community of St. Albert, the Trustees from the two St. Albert School Districts, the RCMP, and the City of St. Albert, we subscribe to the Safe and Caring Schools Initiative and we will not tolerate **any** participation in froshing activities. **Consequences will include immediate suspension for a period up to five school days and may include the exclusion of a student from extracurricular activities, expulsion from school or school district, and criminal charges.**

Alcohol & Controlled Substances

Any student who is in possession of, or under the influence of any illegal substance, alcohol, or inhalants on school property, or during school sponsored activities will face immediate suspension and/or expulsion as outlined in the **Drug Free Protocol for St. Albert Schools** and the **Code of Conduct for St. Albert Protestant Schools**. The **Drug Free Protocol for St. Albert Schools** provides that unannounced patrols by RCMP personnel and a canine member be conducted in cooperation with school administration.

Parking

Bellerose has two parking lots. **The East Side Lot is reserved for staff**, with visitor parking in the designated area. **Students are to only use the West Side Lot** and are expected to use the student parking area in an appropriate manner. Students will be informed of parking regulations at opening assemblies. **Student vehicles are parked at YOUR OWN RISK.**

Smoking: Bellerose is Now a Tobacco-Free School!

In order to fully support our students to lead long, healthy, active lives, Bellerose Composite High School is now a tobacco-free zone. Students of any age are not allowed to use any type of tobacco product while on school property. Out of respect for our community residents, please be reminded that smoking on walkways and green spaces is against public bylaw. Residents will be made aware of the new Bellerose Tobacco-Free Policy and will be encouraged to report incidents to the RCMP or Bylaw Enforcement.

Consequences will include a Tobacco Education Course where mandatory attendance is required. This course will be provided throughout the semester at the school by the Primary Care Network, the first of which will take place on **September 28 from 10:45 am to 11:45 am during the Flex Block**. Failure to comply with this consequence may result in further disciplinary procedures, including service to the community and possible suspension.

Smoking cessation programs will be made available at the school for students who would like support to quit smoking. These programs will take place over a 3-week period each semester. The first will be held **October 13, 20, and 27 from 10:45 am-11:45 am during Flex**. The second semester session will be held **April 5, 12, and 19 from 10:45 am to 11:45 am during Flex**. Stay tuned to announcements for room locations. Further information on smoking cessation programs is available through Student Services and the Primary Care Network in St. Albert.

Smokeless not harmless: athletes against tobacco programs will also be available for students in our athletic programs at the teacher's discretion. These programs deliver a comprehensive health education to students and young athletes. Visit www.saspcn.com for more information or support outside of the school.

Trespassing

Bellerose students are not permitted to visit other schools except for school related business. If you must visit another school for school related business, you are required to register at the general office immediately. You will then be assisted with your business. **If you trespass at another school, you will be subject to discipline at Bellerose.**

Please do not invite or otherwise encourage students from other schools, or outsiders of any kind, to visit Bellerose without permission. Trespassing is a serious offense. You will be held responsible for the actions of anyone you bring to school.

Cellular Phones & Wireless Devices

Cell phones and similar wireless devices are not to be seen, heard or used in teaching and learning spaces, unless a student is specifically directed by a teacher to utilise a device. This includes use as multimedia players and cameras (iPods, laptops, etc). Technology has its place, but also needs to be put in its place.

If a student must be contacted for any reason during class time, parents/guardians should contact the Front Office and the message will be relayed to the student. For emergencies only, the student will be contacted immediately in the classroom.

Please be courteous and aware of others when using cell phones in designated times and locations.

Note: Alberta Education policy states that students may not bring cell phones and/or personal audio devices into the examination room.

Cameras

We value and respect personal privacy. Cameras of all types (cell phones, etc.) are to be used only as directed by a staff member.

Freedom of Information & Protection of Privacy (FOIP)

Privacy of student information and identification is in place at Bellerose. Parents requesting any information about their child will be asked to provide the 5-digit school identification number given to the student at registration and found on student timetables and reports. If applicable, we also request that a copy of any court order denying access be given to the school. FOIP information is included in the Registration Package mailed home with timetables at the end of July. Any concerns or questions should be directed to the Principal.



School Resource Officer (SRO)



The School Resource Officer Program, originated in 2001, is a collaborative project involving the St. Albert RCMP Detachment, City of St. Albert, and the St. Albert Protestant School District. This initiative falls within the School Districts' mandate and philosophy for "Safe and Caring Schools". Bellerose Composite High School supports this Safe and Caring Initiative and purchases the services of a School Resource Officer (SRO). The presence of the School Resource Officer within the school allows students, staff, and parents to interact with an RCMP Officer in a manner that is consistent with fostering positive community relations. The SRO is available to all stakeholders on both an individual basis and within group situations.

The School Resource Officer can be contacted during the day through the Main Reception Desk at Bellerose at 780.460.8490 or if necessary, after hours by calling the RCMP Detachment at 780.458.4300.

Computer Usage

Educational Purpose

1. The school computer network and the SPSnet have been established for a limited educational purpose. The term "educational purpose" includes classroom and library activities, curriculum-related research, career development, and limited self-discovery activities as determined by the classroom teacher or the school administration. **Only students with an account activated by the school may access school computers.**
2. The school computer network and SPSnet have not been established as public access services or a public forum. St. Albert Protestant Schools has the right to place reasonable restrictions on the material accessed or posted through the system. It is expected that students will obey the law and follow rules set forth in the school with respect to individual use of the computer network and the SPSnet. **Parents and students are expected to maintain awareness of district technology rules. The "Acceptable Use Guides" is posted in classrooms and labs and on the BCHS website: <http://bchs.spschools.org>**
3. The school computer network or the SPSnet may not be used for commercial purposes. This means an individual may not offer, provide, or purchase products or services through the network or SPSnet.
4. The school computer network or the SPSnet may not be used for political lobbying, but may be used to communicate with elected representatives and to express opinions on political issues.
5. Additional information and guidelines are in Registration Packages and the account agreements are expected to be signed and returned at registration.

Availability

Access to computer equipment is managed by user names and passwords assigned to individual students by the school. Students will find it useful to have email accounts with public providers such as Gmail or Hotmail. The School does provide each student with a Gmail Account for their use. Microsoft Office products are installed on all computers. **Please be aware that the software version at the school may be an older version and students must save documents from home to be compatible with software at the school.** Additional special software as appropriate to the curriculum is installed on selected machines. This wide range of hardware and software products will be utilized by students as integral components of many courses. As students have access to MSOffice applications, many teachers expect these tools to be utilized in assignments. The Library offers computers to students for use in completing assignments out of class time.

Limitations

The equipment and software in the school varies widely in vintage, power and capacity. Students may find that work prepared on recently acquired equipment at home will not always function as they may expect at school. Students should be aware of this and should take steps to ensure they understand software compatibility issues posed by the computers they have access to.

Privately Owned Laptops, Notebooks & Other Network Devices

For reasons of security, students are currently permitted to connect their own computers or other network devices to the school wireless network for Internet access only. **Students are not allowed to connect their own devices to the wired network.**

Graduation Eligibility

To be eligible to participate in graduation activities, a Bellerose student must meet the requirements for an Alberta High School Diploma by the end of June of their Grade 12 year. The student must have completed, or be enrolled in and passing, sufficient courses to meet all diploma requirements including a minimum of 100 credits (see page 8).

Students who wish to have independent study or off-campus courses considered as part of the qualifications must:

- Be registered in the course on or before October 1 for Term 1 and March 1 for Term 2.
- Have successfully completed one-half of the course requirements by November 9 for Term 1 and April 11 for Term 2.
- **Provide documentation of course registration to the Graduation Eligibility Administrator, Mr. Chorney, on the appropriate form, which is available from an Administrator.**
- Off-campus courses must be completed by May 18, 2012, in order to have your name in the Graduation Program.

Grad Eligibility listings will be posted as follows:

- First Posting – Late October
- Second Posting – Early December
- Third Posting – Late February
- Fourth Posting – Late April
- Fifth (Final) Posting – Late May

Final printing of the Grad Program will be Wednesday, May 23, with no changes after printing.

Graduation 2012

Graduation Rehearsal

Mandatory Attendance

Thursday, June 7 at Bellerose

Commencement Ceremony

Saturday, June 9, in the Morning
at the Shaw Conference Centre

Banquet & Dance

Saturday, June 9, in the Evening
at the Shaw Conference Centre

Guidelines for Academic Misconduct

Academic misconduct in any manner is a serious offence.

Plagiarism involves submitting or presenting work in a course as if it were your own work done especially for that particular course when, in fact it is not. Most commonly plagiarism exists when:

- (a) The work submitted was done in whole or a sub-portion by an individual other than the presenter
- (b) Parts of the work are taken from another source without reference to the original author
- (c) The whole work is copied from another source
- (d) A student submits or presents work in one course which has also been submitted in another (although it may be completely original to that student) without the knowledge of or prior agreement of the teacher involved

Cheating on tests or examinations includes, but is not limited to:

- (e) Speaking to other students or communicating with them under any circumstances
- (f) Bringing any materials or devices into the examination room not authorized by the examiner
- (g) Consulting any person or materials outside the confines of the examination room
- (h) Leaving answer papers exposed
- (i) Persisting in attempts to read other students' examination papers

Other academic misconduct may include:

- (a) Tampering with examination scripts, class work grades and/or class records
- (b) Failure to abide by directions given by a teacher regarding the individuality of work handed in
- (c) The acquisition of examination materials without prior authorization
- (d) The impersonation of another student in an examination or other class assignment
- (e) Falsification or fabrication of reports

Any student who voluntarily and consciously aids another student in the commission of one of these offences is also guilty of academic misconduct.

Penalties: In cases in which the school administration is satisfied that a student is guilty of plagiarism, cheating or other academic misconduct, the normal penalty may be a grade of zero, a letter placed on the student's file, student placed on probation, suspension, withdrawal from the course, and in extreme circumstances expulsion.

High School Program, Credit Load & Timetables

To earn an Alberta High School Diploma, a student must complete a minimum of 100 credits and meet the course/subject minimum requirements. (Refer to page 8 of this handbook.) Students and parents should ensure that appropriate course selections are made in respect to a student's ability and interest, in regards to achievement in prerequisite courses.

Students should plan programs to their best advantage, keeping diploma requirements and career aspirations in mind. Completing a minimum of 40 credits in Grade 10 and a minimum of 35 credits in Grade 11 is recommended and allows for maximum flexibility in the Grade 12 year when diploma exams often add extra demands. Students scheduled as half-time or less may have timetables adjusted to facilitate leaving school prior to the end of the day. **Students with open blocks in their schedules are expected to be engaged in learning-related activities in the library or cafeteria without interference in any other student's right to a learning environment.** Students and/or parents needing information, clarification, or advice, should contact an Administrator or Counsellor.

Prerequisite Marks for Registration

The recommended mark in any 10-20-30 sequenced courses in order to advance to the next level is 65% or better.

Most of the 10-20-30 sequenced courses are a continuation from one course to the next. For example, success at a 20-level course requires students to understand materials from the 10-level, and the 30-level course builds upon the 20-level course. A very high percentage of those students who do not have a 65% in the prerequisite course do not finish the sequential course, or tend to fail the subsequent course unless a drastic change in both time commitment and work habits are made by the individual student involved. Repeating a 30-level course does not always improve marks if the background needed was the 20-level course.

Student course registration for the fall of the next school year will reflect current achievement (marks). When marks exceed the 65% benchmark, registration can be changed. If you wish to have your son/daughter registered in the next course, with a mark less than 65% but above 50%, please indicate this to Administration in writing. Please indicate your rationale for this decision.

Course Changes & Withdrawals

Timetables for a school year will be made available to students prior to school start-up. School Administrators and Counsellors will be available, prior to class commencement, for students to request timetable adjustments to address reasonable changes such as:

1. Changes or additions initiated by the school.
2. Course additions are accepted to fill an “empty space” in a timetable.
3. Graduation requirements for a Grade 12 student.
4. Retaking a course due to not successfully completing the course.
5. EXTREME cases related to issues that might significantly affect student learning.

Students are expected to be in classes as of the first day of each semester. Any necessary adjustments requested after classes begin must include:

1. Filling out the Course Change Form.
2. Submitting the form to Ms. Jyoti Mangat, Assistant Principal for IB students, and to Student Services for all other students.
3. **Deadlines: Friday, September 9 for Semester 1 and Wednesday, February 8 for Semester 2.**

We want students to succeed. Therefore, when consideration is being made to withdraw from a course, students need to discuss the implication of their request with a number of people. Each discussion may provide an alternative to course withdrawal that best meets each student's individual needs.

To proceed with a course withdrawal, the student must obtain a **Course Withdrawal Form** from the Student Services office and follow the process as outlined. **The final step to complete a withdrawal will be an appointment with an Administrator.**

Students are expected to demonstrate a commitment to the courses they select and to complete courses started. Should a student choose (or be recommended for) withdrawal from a course, a final mark will be assigned and will appear on the Alberta Education Transcript of Marks.

NOTE: A FINAL MARK WILL BE ASSIGNED TO ANY COURSE WITHDRAWALS AFTER MID-TERM MARKS HAVE BEEN ISSUED.

Appeals

A student may appeal a mark, resulting from an evaluation process, in the following steps:

1. Discussing the situation with the teacher of the course in which the evaluation took place.
2. Applying to the Department Head of the subject area to review the situation if a resolution from the student-teacher review is not satisfactory.
3. Applying to the Principal if a satisfactory solution is not reached with the Department Head.

Assessment & Reporting

Student assessment is most often based on a variety of methods ranging through classroom work, individual work, homework, projects, and formal examinations. Students will receive a course outline at the beginning of a course, which includes the pattern for assessment. Formal reporting occurs three times each semester:

1. In both semesters, before the end of the sixth week, each teacher will provide **progress information** to each student for each course. PROGRESS REPORTS ARE NOT MAILED. Students will be expected to share all progress information with parents.

Students and parents/guardians are encouraged to keep up to date on student progress via our HomeLogic program. We ask that you review HomeLogic reports on-line prior to booking and attending Parent-Teacher Interviews.

Information on how to complete online booking of Parent-Teacher Interviews, along with Attendance Profiles, are mailed home with the October and March *Bellerose Bulletin* newsletter. Information is also posted on our website: <http://bchs.spschools.org>.

Scheduled interviews occur after progress information and before Mid-Term Reports:

Semester 1

- Wednesday, October 19, 2:00-5:00 pm & 6:00-9:00 pm
- Thursday, October 20, from 6:00-9:00 pm

Semester 2

- Tuesday, March 20, 2:00-5:00 pm & 6:00-9:00 pm
- Wednesday, March 21, from 6:00-9:00 pm

2. At the mid-point of the semester a **Mid-Term Report** is mailed home and provides a grade standing and attendance information.
3. At the end of each semester, following final exams, a student will be issued a final mark in each completed course and a **Final Report** is mailed home. Completed course marks are reported to Alberta Education for inclusion on each student's education file.

Note: Students writing Grade 12 diploma course examinations will have those marks issued from Alberta Education approximately three weeks after final exams. (The final mark on diploma courses is a blended mark, calculated with 50% of school awarded mark and 50% of diploma exam mark.)

Course Challenge

Course challenge is a provision that allows senior high school students to challenge the expectations for a course. On the rare occasion that this occurs, students may choose to become involved in a formal assessment process rather than taking the course. Course challenge is for students who believe that they already possess the expected knowledge, skills, and attitudes as defined by the Program of Studies for a given course. Normally, a course challenge will apply only to a course that is at a higher level in a course sequence, or is at a similar level in an alternative course sequence. Students shall attempt a particular course challenge only once.

Course challenges are intended to:

1. Meet the diverse needs of students
2. Encourage students' ownership of their learning, and
3. Acknowledge the learning that students acquire in a variety of settings not necessarily limited to schools

To **initiate** the course challenge process, a student must:

1. **Apply within the first two weeks of the semester** (if necessary, exceptions may be made in the case of late registrants) by,
2. **Submitting**, to the appropriate Department Head, a course challenge application form and,
3. **Including** with this application a **written rationale** for requesting a course challenge

This rationale should:

(a) Clearly state the reason(s) for seeking a course challenge

(b) Indicate a willingness to complete the challenge in a timely and practical manner

(c) Provide evidence of readiness to challenge the course (e.g. the student could discuss previous assignments &/or experiences related to the subject that illustrate ability, knowledge, and skills in the course being challenged)

4. **Meet with the appropriate Department Head** to discuss his/her application and rationale. Following this meeting, applicants who choose to proceed with the challenge process, will review the course challenge package with the Department Head, and set completion dates for the various components.

The evaluation of a course challenge is the responsibility of the appropriate Department Head who may also designate a certificated teacher who has taught the course to assist with the evaluation process.

All course challenge marks, successful and unsuccessful, are reported to Alberta Education and become a part of a student's official transcript.

Flex Schedule

Shared Student, Parent & Teacher Findings

- Need for individual/remedial instruction
- Time to complete school work/homework during the day
- Time for activities (leadership, events, clubs, meetings...)
- Opportunity to access professional staff during the day for assistance/extra help
- Catch up on missed classes, work, exams, labs...
- More time for school culture time (breaks, lunch, social interaction)
- Recognition of numerous student commitments (work, athletics, clubs...)

Flex Block Activities

- Complete homework
- Get help in a subject you are struggling with
- Get help to improve grades
- Earn extra credits in various programs
- Complete missed exams and labs
- Catch up on assignments/work
- Eat
- Participate in teams and clubs
- Access athletic facilities
- Complete group work projects
- **Everything you need to do to be successful and on time in class!**

Additional Points

- You can be assigned to a specific place during flex time, particularly if you fail to be in class, on time, completing your work
- You have no excuse to be late, or skip

This is an opportunity to make sound choices and act responsibly.

Bell Schedules 2011-2012

On the first Wednesday of the month (except in September, January, and February), staff will attend morning staff meetings and professional development workshops. **On staff meeting days, students will begin school at 9:30 am. Buses will run accordingly.**

Monday to Thursday			
Block 1	8.00	-	9.15
Break	9.15	-	9.25
Block 2	9.25	-	10.40
Block 3 Flex Block	10.40	-	11.50
Block 4	11.50	-	1.05
Break	1.05	-	1.15
Block 5	1.15	-	2.30
Block 6	2.30	-	3.45
Block 7	3.45	-	5.00

Friday & Early Dismissal Days (for Parent-Teacher Interviews on October 19 & March 20)			
Block 1	8.00	-	9.10
Break	9.10	-	9.20
Block 2	9.20	-	10.30
Block 3 Brunch	10.30	-	11.00
Block 4	11.00	-	12.10
Break	12.10	-	12.20
Block 5	12.20	-	1.30

Note: Blocks 6 & 7 are used only for Work Experience, Musical Theatre/Advanced Acting

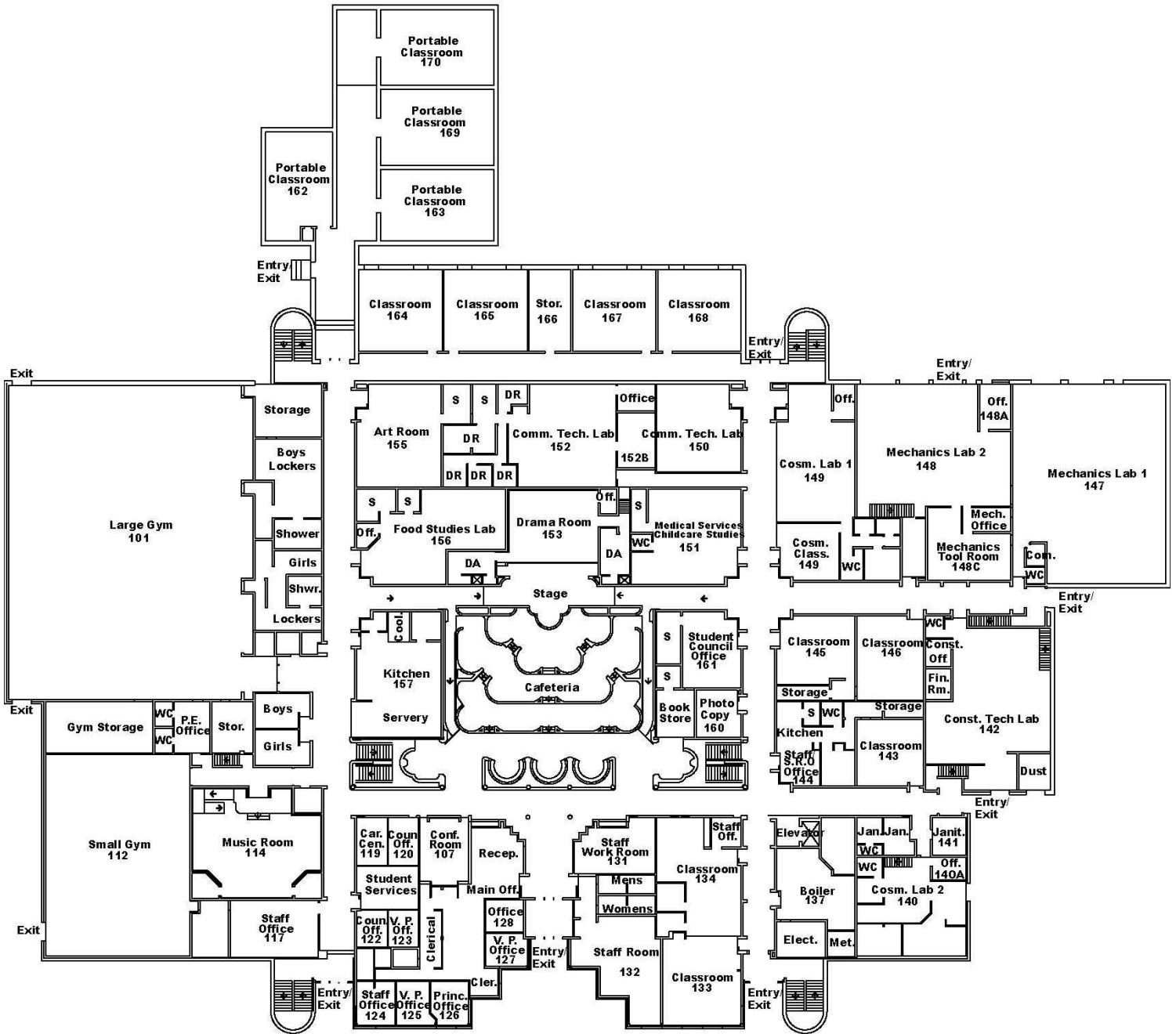
Staff Meeting Days			
Block 1	9.30	-	10.30
Break	10.30	-	10.40
Block 2	10.40	-	11.40
Block 3 Brunch	11.40	-	12.20
Block 4	12.20	-	1.20
Break	1.20	-	1.30
Block 5	1.30	-	2.30
October 5		March 7	
November 2		April 4	
December 7		May 2	
		June 6	

Semester 1 Timetable

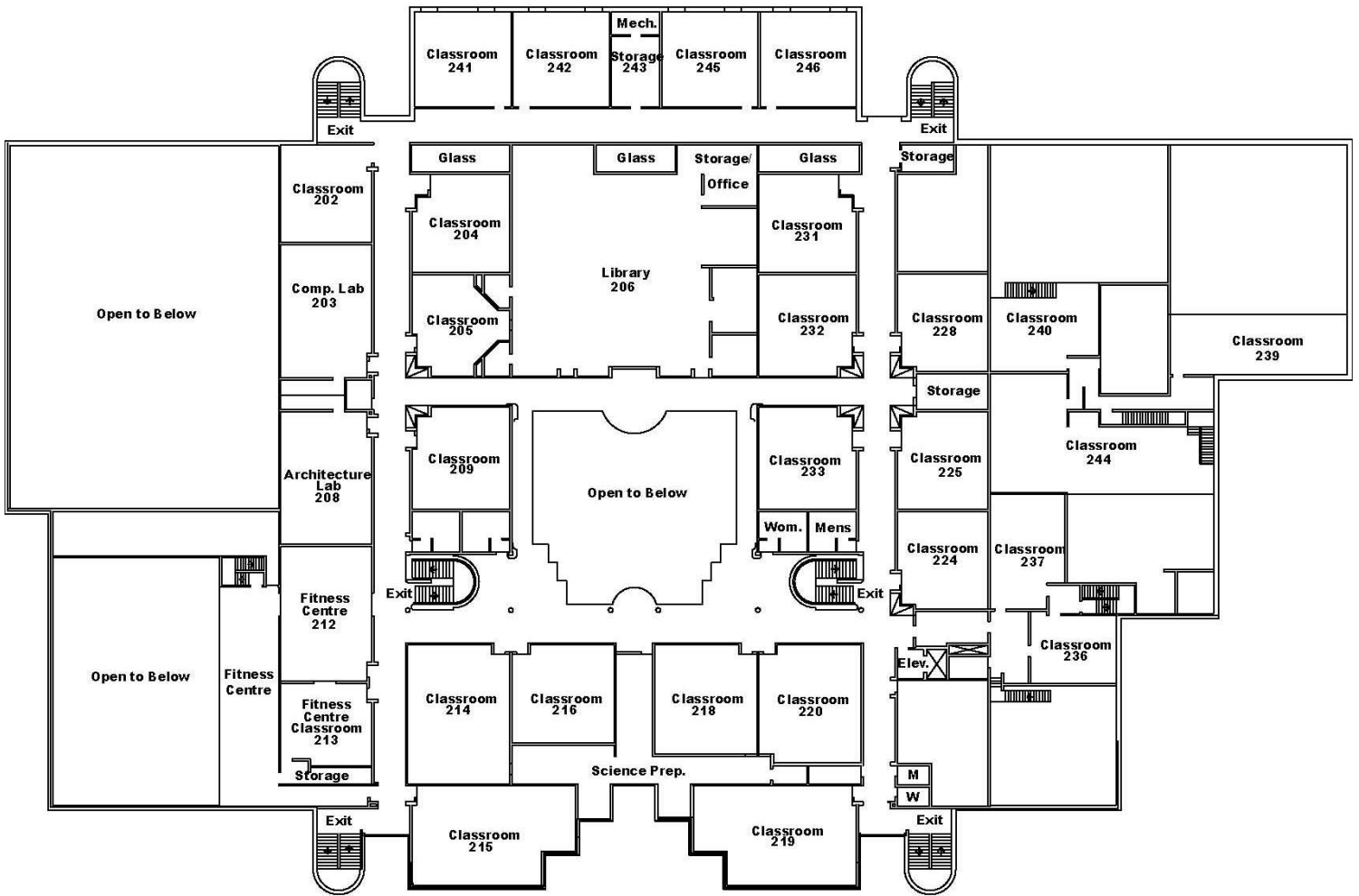
BLOCK	MONDAY	TUESDAY	WEDNESDAY	THURSDAY	FRIDAY
Block 1					
Break					
Block 2					
Block 3 Flex Block					Brunch
Block 4					
Break					
Block 5					
Block 6	Work Experience	Work Experience Musical Theatre	Work Experience	Work Experience Advanced Acting	Work Experience
Block 7		Musical Theatre		Advanced Acting	

Semester 2 Timetable

BLOCK	MONDAY	TUESDAY	WEDNESDAY	THURSDAY	FRIDAY
Block 1					
Break					
Block 2					
Block 3 Flex Block					Brunch
Block 4					
Break					
Block 5					
Block 6	Work Experience	Work Experience Musical Theatre	Work Experience	Work Experience Advanced Acting	Work Experience
Block 7		Musical Theatre		Advanced Acting	



Main Floor Plan



Upper Floor Plan

What & Where

- Announcements**
- Daily PA Announcements
 - Student Council TV (SUTV)

- ATM**
- Located in Main Floor (Hallway to Right of Entrance)

- Bulldog Clothing**
- Available at various times throughout the year
 - Order forms available at Front Office

- Cafeteria / Food Services**
- Open between 7:45 am to 11:50 am
 - \$20.00 lunch cards are available for purchase (cash at the Cafeteria (see ATM above) or Debit/Visa/MasterCard in the Front Office)

- Career & Post-Secondary Information & Applications**
- Student Services and BCHS Website

- First Aid**
- Infirmary in Front Office

- Leadership Class**
- Works in conjunction with Student Council to provide the co-curricular activities

- Lost & Found:**
- Books in the Library
 - Personal items in the Front Office

- Renaissance Information**
- Announcements and SUTV

- Student Council Office**
- Room 161
 - General Information
 - STUDENT HELP
 - Poster Approval Centre

- Student ID Cards**
- Temporary card issued at Registration
 - Replacement cards available through the Library (\$5.00 charge)

- Student Parking**
- See page 13

- Vending Machines**
- Throughout the school

August 2011

Personal Assessment

Assess yourself!
 Consciously knowing your strengths and weaknesses will help you decide what you want to do with your life. Personal assessment includes thinking about your values, likes, proficiencies, and talents.

SUNDAY	MONDAY	TUESDAY	WEDNESDAY	THURSDAY	FRIDAY	SAT
	Civic Holiday 1	2	ELA 30-1 & 30-2 PART A in AM PART B in PM 3	SOCIAL 30-1 & 30-2 PART A IN AM PART B IN PM 4	CHEMISTRY 30 in AM 5	6
7	P & A MATH 30 in AM 8	BIOLOGY 30 in AM 9	PHYSICS 30 in AM 10	SCIENCE 30 in AM 11	FLA 30-1 PART A in AM PART B in PM 12	13
14	Football Registration 6-8 pm 15	Scheduling Appointments for Timetable Changes 8am-12pm Football Training Camp Starts 6-8pm 16	17	18	19	20
21	22	23	24	25	26	27
Appointments for Timetable Changes						
28	Operational Day 29 REGISTRATION Gr 11: 8:30-10am Gr 12: 10:30am-12pm Gr 10: 1-2:30pm & School Pictures Orientation with Guided Tours 1-2:30pm	Operational Day 30 No Classes – No Students	Day 1 31 FIRST DAY OF CLASSES 8:00am-2:30pm Assemblies Block 2: Grade 12s Block 4: Grade 11s Block 5: Grade 10s Team & Club Fair All Day in Large Gym			

September 2011

Work Ethic

A strong work ethic means taking pride in the work you do, being an honest person, and striving to be the best you can be. At school, a strong work ethic will generally earn you better grades. Once you enter the workforce, a strong work ethic will likely translate into promotions and higher wages.

SUNDAY	MONDAY	TUESDAY	WEDNESDAY	THURSDAY	FRIDAY	SAT
				Day 2 1	Day 1 2	3
4	Labour Day No School 5	Day 2 6	Day 1 No Staff Meeting Regular Buses for 8:00am Start 7	Day 2 Week of Welcome BBQ at Flex 8	Day 1 Semester 1 Course Change Form Deadline 9	10
		Week of Welcome - Leadership Activities at Flex - 11:00am Start				
11	Day 2 Team & Club Photos in Morning 12	Day 1 IB 12 Group IV Project All Day Leadership at Flex Meet the Teacher BBQ 5-6:45pm School Council AGM at 7pm 13	Day 2 14	Day 1 Terry Fox School Run 15	Day 2 16	17
18 Terry Fox Day	Day 1 19	Day 2 Leadership Retreat All Day 20	Day 1 Scholarship Info Session at 11:15am in Rm 242 21	Day 2 22	Day 1 23	24
25	Day 2 26	Day 1 Leadership at Flex 27	Day 2 Leadership / Student Council Retreat - All Day Smoking Cessation 10:45-11:45am Bulldog Support Society AGM at 7pm in Staff Rm 28	Day 1 Tentative: Coffee House at 7:30pm 29	Day 2 Newsletter Mailed 30	

October 2011

Managing Information

More information has been produced in the last 30 years than in the previous 5000! It's no wonder, then, that it's critically important to be able to manage this information effectively. Managing information includes knowing where and how to access it, organizing it once it's found, and applying it appropriately.

SUNDAY	MONDAY	TUESDAY	WEDNESDAY	THURSDAY	FRIDAY	SAT
						1
2 Run for the Cure	Day 1 3	Day 2 Leadership at Flex Creating School Culture in Afternoon 4	Day 1 Staff Meeting Classes Start at 9:30am World Teachers' Day 2010-2011 Awards Night 7:30pm in Large Gym 5	Day 2 Tentative: Renaissance 2010-2011 Honours Assembly Block 1 in Large Gym U of A Information Session - Details TBA 6	Day 1 7	8
9	Thanksgiving Day No School 10	Staff PD Day No School 11	Day 2 Photo Retakes 12	Day 1 Smoking Cessation 10:45-11:45am 13	Day 2 Me to We Conference All Day 14	15
					NAIT Open House	
					Duke of Ed Trip	
16 Duke of Ed Trip	Day 1 17	Day 2 Leadership at Flex School Council 7pm 18	Day 1 Parent-Teacher Interviews 2-5 & 6-9pm Early Dismissal 1:30pm 19	Day 2 Smoking Cessation 10:45-11:45am Parent-Teacher Interviews 6-9pm Regular Dismissal 20	Day 1 Diploma Rewrite Form Deadline 21	U of A Open House & Concordia Open House 22
				WCC Volleyball Tournament		
23	Day 2 24	Day 1 25	Day 2 26	Day 1 Smoking Cessation 10:45-11:45am 27	Day 2 Next Newsletter Mailed on November 18 28	29
	Dodgeball Tournament at Flex					
30	Day 1 Halloween Activities at Flex Grad List 1 Posted This Week 31					

November 2011

Thinking Skills

The point of most of your schoolwork is not only to teach you the subject matter, but also to teach you to think. Important thinking skills include forming your own opinions, being open-minded, solving problems effectively, being creative and innovative, and learning to evaluate the information you receive.

SUNDAY	MONDAY	TUESDAY	WEDNESDAY	THURSDAY	FRIDAY	SAT
		Day 2 Leadership at Flex 1	Day 1 Staff Meeting Classes Start at 9:30am 2	Day 2 Leadership Retreat at Flex & Afternoon Tentative: Jazz Concert & Coffee House 7:30pm 3	Day 1 Tentative: Blood Donor Clinic 4	MacEwan Open House 5
6 DST Clocks Fall Back	Day 2 7	Day 1 Leadership at Flex 8 Grad Parent Meeting 6:30pm in Atrium School Council 7pm	Day 2 9	Day 1 Remembrance Day Assembly Outside 10:30-11am 10	Remembrance Day No School 11	12
13	Day 2 14	Day 1 Leadership at Flex 15	Day 2 16	Day 1 Cupcake Festival at Flex St. Albert Post-Secondary Night at Paul Kane 17	Day 2 Mid-Term Reports Mailed with Newsletter 18	19
20	Day 1 21	Day 2 22	Day 1 23	Day 2 French Challenge Meeting at Flex in Rm 204 24	Day 1 25	26
Leadership Survivor Week at Flex						
27	Day 2 Grad List 2 Posted This Week 28	Day 1 Leadership at Flex 29	Day 2 30			

December 2011

Social Responsibility

What responsibilities do you have as a citizen of your school, community, and country? Socially responsible people consider the results of their actions on others, follow the laws of the land, help out those in need, and act in an ethical manner.

SUNDAY	MONDAY	TUESDAY	WEDNESDAY	THURSDAY	FRIDAY	SAT
				Day 1 U of A Early Admission Workshop - Details TBA	Day 2 Physics Field Trip to WEM	
4	Day 1 Team & Club Photos in Morning	Day 2 Leadership at Flex	Day 1 Staff Meeting Classes Start at 9:30am	Day 2 Bikeathon Committee Meeting at Flex in Rm 209	Day 1 Tentative: Renaissance Breakfast Tentative: Jazzy Christmas Music Night at 7:30 pm	10
11	Day 2	Day 1 Leadership at Flex No School Council	Day 2	Day 1	Day 2 Newsletter Mailed	17
18	Day 1	Day 2	Day 1 Dec. 21 ▶▶▶ IB Cuba Study Vacation Departs	Day 2 French Challenge Portfolios Due	Day 1 Pancake Breakfast & Coffee House EARLY DISMISSAL & Buses at 11am	24 CHRISTMAS BREAK ▶▶▶ Dec. 24 to Jan. 8
	Christmas Leadership Activities at Flex					
25 Christmas Day	26 Boxing Day	27	28	29	30	31 IB Cuba Study Vacation Returns

January 2012

Listening & Speaking

Despite the popularity of chat rooms and text messaging, listening and speaking are not going to go away. Therefore, it's important to continually work on oral communication skills such as active listening, understanding body language, and articulating your thoughts clearly.

SUNDAY	MONDAY	TUESDAY	WEDNESDAY	THURSDAY	FRIDAY	SAT
1	2	3	4	5	6	7
8	Day 2 9	Day 1 10	Day 2 11	Day 1 12	Day 2 FLA 30-1 Part A in AM 13	14
◀◀◀ Computer Labs Closed January 9 to 12 ▶▶▶						
CLASSES RESUME Jan. 9 to Feb. 3 ▶▶▶▶ Pay Grad Invoices		Leadership at Flex - Open House Planning School Council 7pm	No Staff Meeting Regular Buses for 8:00am Start ELA 30-1 & 30-2 Part A in AM	SOCIAL 30-1 & 30-2 Part A in AM French Challenge Exams at Flex Block 4 & 5 in AM Block 1 & 2 in PM		
			Regular Grade 10 & 11 Classes All Day Regular Grade 12 Classes in PM			
15	Day 1 16	Day 2 17	Day 1 LAST DAY OF REGULAR CLASSES 18	Day 2 ELA 30-1 & 30-2 Part B in AM 19 ALL TEXTBOOKS RETURNED ON DAY SUBJECT EXAM WRITTEN	Day 1 SOCIAL 30-1 & 30-2 Part B in AM 20	21
22	Day 2 FLA 30-1 Part B in AM 23	Day 1 BIOLOGY 30 in AM 24	Day 2 P & A MATH 30 in AM 25	Day 1 CHEMISTRY 30 in AM 26	Day 2 PHYSICS 30 in AM 27	28
Tentative: Ski & Snowboard Club Trip						
29	Day 1 SCIENCE 30 in AM 30	Semester Turnaround No Students 31				

February 2012

Reading & Writing

Think grammar lessons or prose reading is useless? Think again! Strong literacy skills will be critical for success not only in school, but also in your future job. Foundational writing skills include grammar and spelling, while reading skills include comprehension and vocabulary acquisition.

SUNDAY	MONDAY	TUESDAY	WEDNESDAY	THURSDAY	FRIDAY	SAT
			Day 1 SEMESTER 2 STARTS 1 No Staff Meeting Regular Buses for 8:00am Start Assemblies: Gr 12 - Block 4 Gr 10 - 1st ½ Block 5 Gr 11 - 2nd ½ Block 5 Final Reports Mailed with Newsletter	Day 2 IB Mentorship 1 2 Bikeathon Registration at Flex on Main Stage	Day 1 Final Day to Pay Grad Invoices 3	4
5	Day 2 NAIT Info Week Feb. 6 to 9▶▶▶ 6	Day 1 Leadership at Flex 7	Day 2 Semester 2 Course Change Form Deadline 8	Teachers' Convention 9 No School	Teachers' Convention 10 No School	11
Grad Photos - Prebooked with Paid Grad Invoice						
12	Day 1 13	Day 2 Valentine Activities at Flex School Council 7pm 14	Day 1 15	Day 2 IB Mentorship 2 16	Day 1 17	18
Grad Photos - Prebooked with Paid Grad Invoice						
"Sweet Charity" Rehearsals at Arden - Feb. 12-14			"Sweet Charity" Performances at Arden 7pm Feb. 15, 16 & 17			
19	Family Day No School 20	Day 2 Leadership at Flex 21	Day 1 22	Day 2 IB Mentorship 3 23 Grade 10 Cayley Grade 11 Fermat Math Competitions	Day 1 24	25
26	Day 2 Grad List 3 Posted This Week 27	Day 1 28	Day 2 Newsletter Mailed 29			

March 2012

Interpersonal Skills

Developing “people skills” is important no matter what your future may hold. In our increasingly connected world, common courtesy, conflict resolution, and developing trust are all important, regardless of the communication medium (phone, online, face to face, etc.).

SUNDAY	MONDAY	TUESDAY	WEDNESDAY	THURSDAY	FRIDAY	SAT
				Day 1 No Mentorship (Edmonton Teachers' Convention) 1	Day 2 2	3 ChoralFest North 3-6pm
				Leadership Bellerose Celebration Week at Flex		
					Duke of Ed Trip	
4 Duke of Ed Trip	Day 1 5	Day 2 6	Day 1 7 Staff Meeting Classes Start at 9:30am Bikeathon Opening Ceremony at 11am Bellerose Open House General Session 6:30 pm IB Session 7:30 pm	Day 2 8 IB Mentorship 4	Day 1 9 Bikeathon Ends at 12pm & Closing Ceremony at 12:15pm	10
	Bikeathon Pledges Submitted in Office Conference Room					
11 DST Clocks Spring Forward	Day 2 12	Day 1 13 Leadership at Flex School Council 7pm	Day 2 14 Pi Day (3.14) at Flex	Day 1 15 IB Mentorship 5	Day 2 16	17 St. Patrick's Day
	Tentative: Pre-IB Small Group Sessions Rm 215 7-8pm 5-6pm 5-6pm					
18	Day 1 19	Day 2 20 Early Dismissal 1:30pm Parent-Teacher Interviews 2-5 & 6-9pm Leadership at Flex	Day 1 21 Parent-Teacher Interviews 6-9pm Regular Dismissal Tentative: Europe Trip Departs	Day 2 22 Newsletter Mailed	23 Interview Lieu Day No School	24 SPRING BREAK ▶▶▶ March 24 to April 1
		Grad Photo Retakes				
25	26	27	28	29	30	31

April 2012

Teamwork

Whether you're playing hockey, finishing a group science project, or supervising the video store night shift, teamwork is key! Good teamwork includes being open to differing ideas, using everyone's unique strengths, supporting each other, and having clear goals that everyone understands.

SUNDAY	MONDAY	TUESDAY	WEDNESDAY	THURSDAY	FRIDAY	SAT
1 April Fool's Day Tentative: Europe Trip Returns	2 Day 1 CLASSES RESUME Deadline for Grad Nominations	3 Day 2 Leadership Retreat in Morning	4 Day 1 Staff Meeting Classes Start at 9:30am	5 Day 2 IB Mentorship 6 Smoking Cessation 10:45-11:45am	6 Good Friday No School	7
IB Preregistration Program Plan Sessions Grade 10 & 11 - Jyoti						
8	9 Easter Monday No School	10 Day 1 Deadline to Submit Diploma Exam Rewrite Form Leadership at Flex School Council 7pm	11 Day 2 Grade 12 Euclid Math Competition Grad Assembly & Voting at Flex	12 Day 1 IB Mentorship 7 Smoking Cessation 10:45-11:45am	13 Day 2	14
IB 10 & 11 Course Selections in Classes						
15	16 Day 1 Team & Club Photos in Morning in Morning	17 Day 2	18 Day 1 2012-2013 Preregistration Prep Sessions in AM in Small Gym	19 Day 2 IB Mentorship 8 Smoking Cessation 10:45-11:45am Tentative: Renaissance Luncheon at Flex	20 Day 1 Mid-Term Reports Mailed with Newsletter	21
IB 10 & 11 Course Selections in Classes						
Leadership Survivor Week at Flex						
22	23 District PD Day No Classes	24 Day 2	25 Day 1 2012-2013 Course Selections in AM in Small Gym Grad Ticket Order Forms Available	26 Day 2	27 Day 1	28
Banff Music Tour						
29	30 Day 2			IB Mentorship 9 2012-2013 Returning Grade 12 Course Selections	French Challenge Meeting at Flex in Rm 204	
Banff Music Tour						
Grad List 4 Posted This Week Rutherford Scholarship & U of A Application Deadline May 1 ▶▶▶						

May 2012

Self Direction

Self direction is about managing your own life and monitoring your own needs. It's about taking control of and responsibility for your words, actions, and thoughts. Think about whether you deal with change successfully, whether you are positive, and whether you are a lifelong learner.

SUNDAY	MONDAY	TUESDAY	WEDNESDAY	THURSDAY	FRIDAY	SAT
		Day 1 Grad Ticket Sales Begin Leadership at Flex Rutherford Scholarship & U of A Application Deadline	Day 2 Staff Meeting Classes Start at 9:30am	Day 1 IB Mentorship 10 Tentative: Hi-5 Recognition at Flex	Day 2 French Challenge 10 Level Exam at Flex	5
Mother's Day 6	Day 1 Education Week ▶▶▶	Day 2 Leadership at Flex School Council 7pm Last Meeting of Year	Day 1 B-Town Chow Down at Flex	Day 2 IB Mentorship 11	Day 1 French Challenge 20 Level Exam at Flex 2012-2013 Course Verifications Mailed	12
Duke of Ed Trip 13	Day 2	Day 1 Leadership at Flex	Day 2	Day 1 IB Mentorship 12	Duke of Ed Trip	
	Day 2	Day 1 Leadership at Flex	Day 2	Day 1 IB Mentorship 12	Day 2 Physics Field Trip to WEM French Challenge 30 Level Exam at Flex Deadline for Off-Campus Courses to Qualify for Grad List	19
20	Victoria Day No School	Day 1 Leadership at Flex Tentative: Red Deer Festival of Bands	Day 2 Final Grad List 5 Posted & Sent to Program Printer	Day 1 Creating School Culture in Afternoon	Day 2 French Challenge Portfolios Due & 31 Level Exam at Flex Tentative: Coffee House at 7:30pm	26
27	Day 1	Day 2 Leadership at Flex	Day 1 Model UN Social 20 & IB History 20 All Day in Small Gym Grad Group Photo at Flex	Day 2 Tentative: Renaissance Assembly Block 2 in Large Gym Followed by Year-End BBQ at Flex Newsletter Mailed		

June 2012

Personal Wellness

Personal wellness is more than just staying physically fit. It's about keeping all aspects of yourself healthy: physically, mentally, and emotionally. This includes such things as exercising regularly, eating right, managing stress effectively, getting enough sleep, being self-confident, and learning new things.

SUNDAY	MONDAY	TUESDAY	WEDNESDAY	THURSDAY	FRIDAY	SAT	
					Day 1 Last Day to Purchase Grad Tickets	1 2	
3	Day 2 Student Council & Grad Council Elections this Week ▶▶▶	4 Day 1 Leadership at Flex No School Council Meeting	5	6 Day 2 Staff Meeting Classes Start at 9:30am	7 Day 1	8 Day 2	9 BCHS Graduation 2012
					◀◀◀ Computer Labs Closed ▶▶▶		
					Grad Rehearsal at Flex in Large Gym		
10	Day 1	11 Day 2	12 Day 1	13	14 Day 2 FLA 30-1 Part A in AM	15 Day 1 LAST DAY OF REGULAR CLASSES ALL LIBRARY BOOKS DUE Locker Cleanout Deadline	16
					◀◀◀ Computer Labs Closed ▶▶▶		
		ELA 30-1 & 30-2 Part A in AM	SOCIAL 30-1 & 30-2 Part A in AM Block 4 & 5 in AM Block 1 & 2 in PM				
		Regular Grade 10 & 11 Classes All Day Regular Grade 12 Classes in PM					
17 Father's Day	18 Day 2 ELA 30-1 & 30-2 Part B in AM ALL TEXTBOOKS RETURNED ON DAY SUBJECT EXAM WRITTEN	19 Day 1 SOCIAL 30-1 & 30-2 Part B in AM	20 Day 2 FLA 30-1 Part B in AM	21 Day 1 Aboriginal Day - No Diploma Exams	22 Day 2 BIOLOGY 30 in AM Lost & Found Donated to Charity	23	
24	25 Day 1 P & A MATH 30 in AM	26 Day 2 CHEMISTRY 30 in AM	27 Day 1 PHYSICS 30 IN AM	28 Day 2 SCIENCE 30 in AM Athletics Pride Night at 7pm	29 Day 1 ½ Day Instructional ½ Day Operational LAST OPERATIONAL DAY Final Reports Mailed with Newsletter	30	

July 2012

Fun in the Sun

Wear sunblock!

SUNDAY	MONDAY	TUESDAY	WEDNESDAY	THURSDAY	FRIDAY	SAT
1 Canada Day ▶▶▶ Registration Packages Mailed in July	2 Tentative: Summer School Starts	3	4	5	6 Tentative: No Summer School	7
8	Tentative: IB Final Marks Download on IBIS & Next Day on Web for Student Access		11	12	13 Tentative: No Summer School	14
15	16 Tentative: Diploma Exam Course Marks Released by Alberta Ed	17	18	19	20 Tentative: No Summer School	21
22	23	24	25	26 Tentative: Summer School Ends	27	28
29	30	31				

August 2012

			1	2 ELA 30-1 & 30-2 Part A in AM ELA 30-1 & 30-2 Part B in PM	3 SOCIAL 30-1 & 30-2 Part A in AM SOCIAL 30-1 & 30-2 Part B in PM	4
5	6 Civic Holiday	7 CHEMISTRY 30 in AM	8 P & A MATH 30 in AM	9 BIOLOGY 30 in AM	10 PHYSICS 30 in AM	11
12	13 SCIENCE 30 in AM	14 FLA 30-1 Part A in AM FLA 30-1 Part B in PM	15	16	17	18
19	20	21	22	23	24	25
25	27	28	29	30	31	

NOTES!

QUESTIONS?

**Make school what you want it to be,
not what people tell you it should be,
and don't be afraid to try new things!**



Make Your Mark!



BELLEROSE
BCHS
COMPOSITE HIGH SCHOOL



ST. ALBERT PROTESTANT SCHOOLS